



RAKU-YAKI

TRIPLE SCONCE



RAKU-YAKI

• TRIPLE SCONCE

The RAKU-YAKI collection is composed of ambitious and assertive pieces. The tiles adorning the furniture and lighting fixtures are crafted using Raku, an ancient Japanese ceramic technique. Thermal shock induces cracks in the glaze, revealing subtle black lines that create random patterns resembling a landscape seen from the sky. This technique makes each piece unique, and the power and magic of artisanal craftsmanship manifest in lighting, tables, buffets, bar cabinets, or wall-mounted pieces. These items exude a subtle refinement, both in design and the aura of the material.

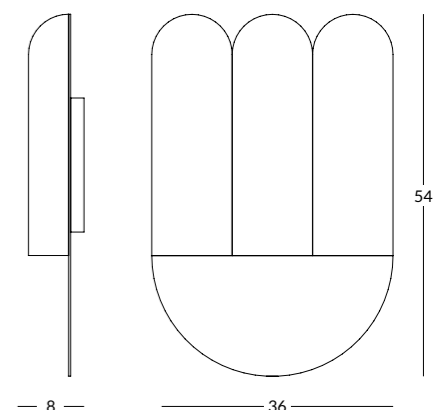
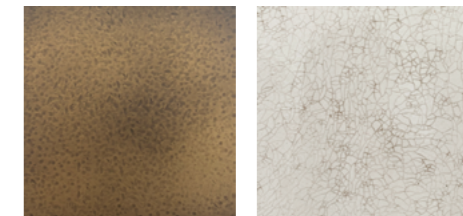
DIMENSIONS

L 36 x P 8 x H 54 cm
W 14,2 x D 3,1 x H 21,3 in

REF. LUM-A006

MATERIALS

Raku and patinated hammered brass
** Raku is an artisanal technique. The result is always random and unique.*



— 8 —

— 36 —

54